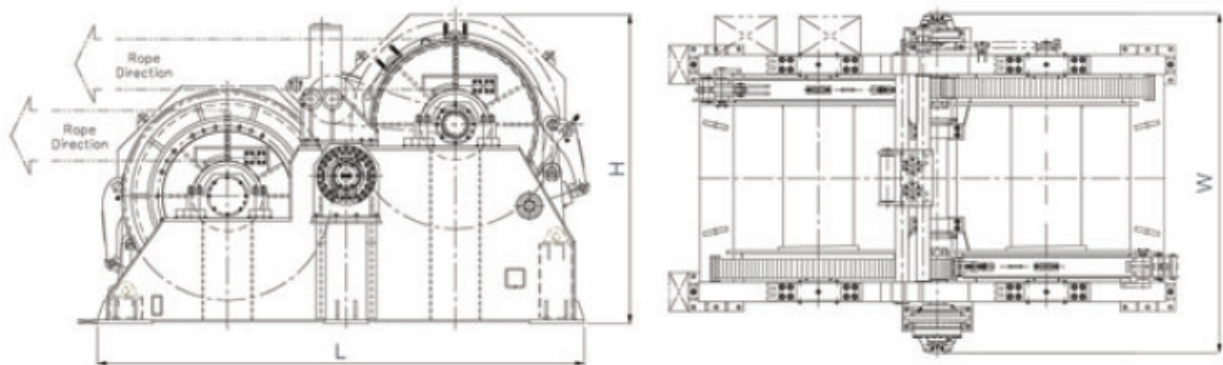
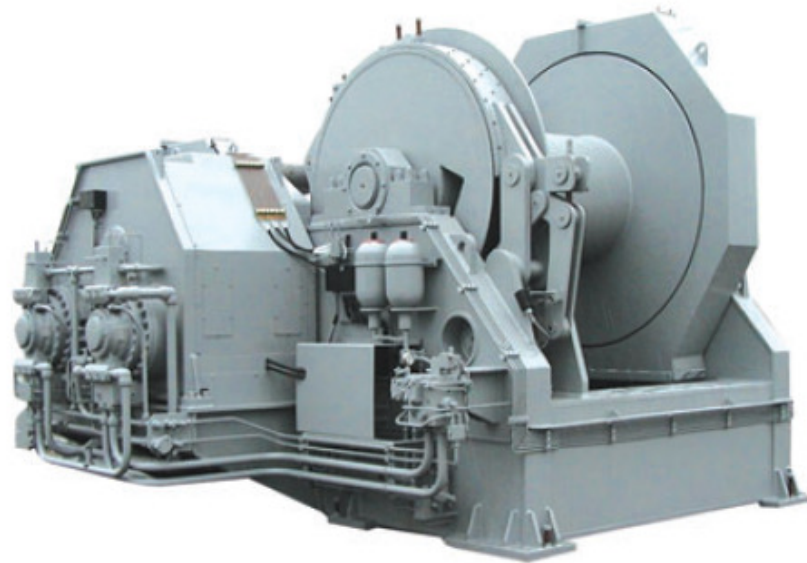


# Anchor Handling / Towing Winch



| Model No.         | Rated Pull 1 <sup>st</sup> (kN) | Drum Capacity (Dia. x m) | Brake Holding (kN) | Overall Dimension (mm) |      |      |
|-------------------|---------------------------------|--------------------------|--------------------|------------------------|------|------|
|                   |                                 |                          |                    | L                      | W    | H    |
| SOE-AHTW-2D-H-050 | 500                             | 48x0850                  | 1550               | 5600                   | 3750 | 3250 |
| SOE-AHTW-2D-H-075 | 750                             | 52x1050                  | 1850               | 5600                   | 3850 | 3350 |
| SOE-AHTW-2D-H-100 | 1000                            | 52x1150                  | 2050               | 5600                   | 4050 | 3450 |
| SOE-AHTW-2D-H-150 | 1500                            | 58x1550                  | 2450               | 5600                   | 4150 | 3550 |
| SOE-AHTW-2D-H-200 | 2000                            | 64x1800                  | 3250               | 5600                   | 5050 | 3650 |
| SOE-AHTW-2D-H-250 | 2500                            | 76x1950                  | 3550               | 6500                   | 5250 | 3750 |
| SOE-AHTW-2D-H-300 | 3000                            | 76x2050                  | 4050               | 6500                   | 5850 | 3850 |

Rated pull up to 3000 kN / Single, double drum / Electrical, Electrical-hydraulic / Customized